

PLANT LIST

Key	Size	Qty.	Botanical Name	Common Name
Trees				
A	24" Box	1	Acer palmatum 'Oshio Beni'	Japanese Maple
B	24" Box	1	Acer palmatum 'Sango Kaku'	Coral Bark Japanese Maple
C	24" Box	1	Cercis canadensis 'Forest Pansy'	Eastern Redbud
D	24" Box	1	Cercis occidentalis	Western Redbud
E	24" Box	1	Cornus florida 'Cherokee Chief'	Flowering Dogwood
F	36" Box	1	Jacaranda mimosifolia	NCN
G	36" Box	2	Lagerstroemia x watereri	Goldenchain Tree
H	24" Box	2	Lagerstroemia 'Muskoegoe'	Crape Myrtle
I	24" Box	2	Lagerstroemia 'Matchez'	Crape Myrtle
J	24" Box	2	Malus floribunda	Japanese Flowering Crabapple
K	36" Box	2	Pistache chinensis	Chinese Pistache
L	36" Box	1	Styrax japonicus	Japanese Snowdrop Tree

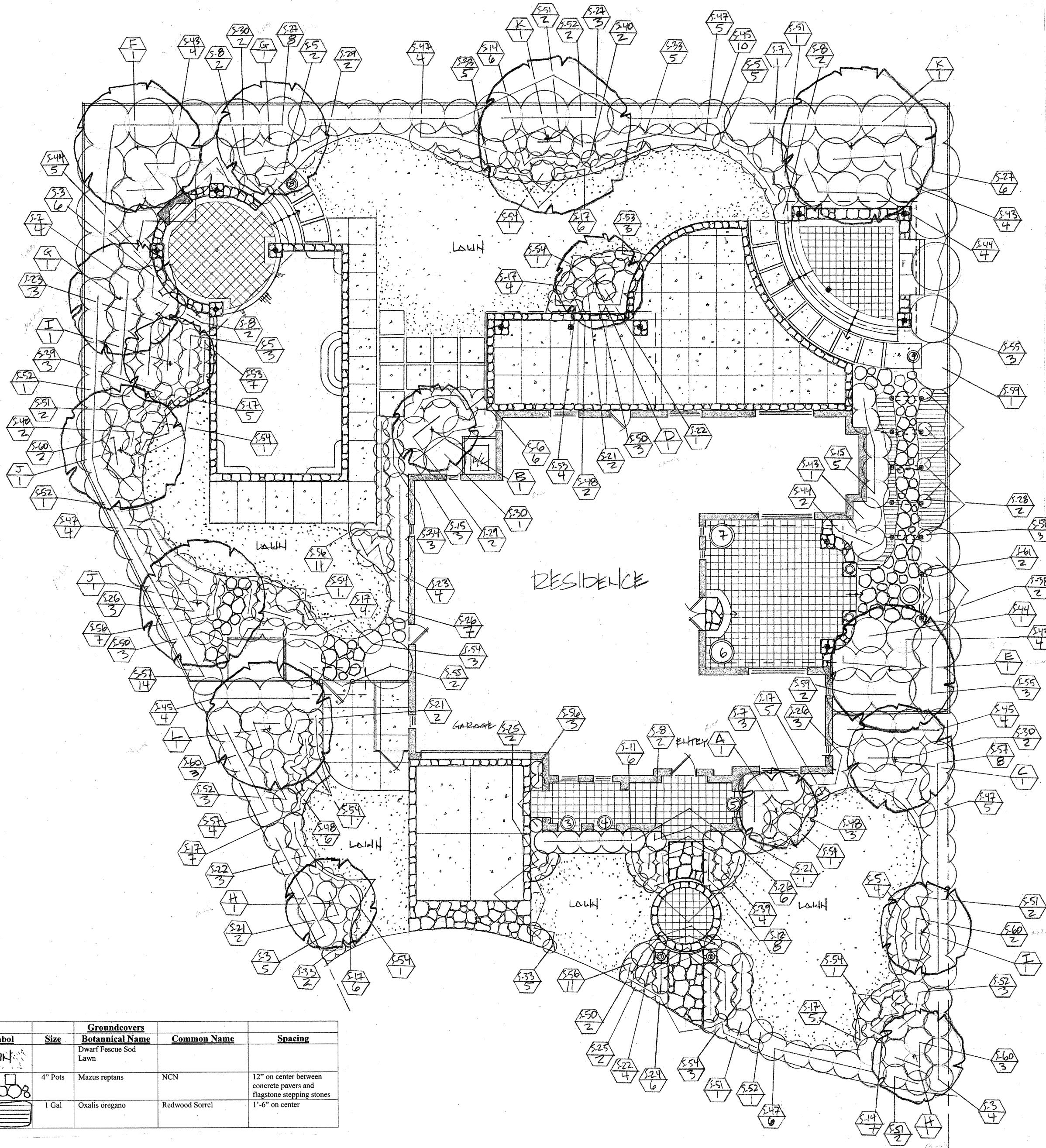
Shrubs				
S-1	1 Gal	3	Anigozanthos hybrids 'Big Red'	Kangaroo Paw
S-2	1 Gal	2	Anigozanthos hybrids 'Bush Dawn'	Kangaroo Paw
S-3	5 Gal	15	Anisodomea x hypomandarum	Cape Mallow
S-4	5 Gal	2	Aspidistra elatior	Cast-Iron Plant
S-5	5 Gal	17	Berberis thunbergii 'Crimson Pymy'	Japanese Barberry
S-6	5 Gal	6	Blechnum spicant 'Silver Lady'	Deer Tongue Fern
S-7	5 Gal	8	Buddleia davidii	Butterfly Bush
S-8	5 Gal	8	Calamagrostis x acutifolia 'Stricta'	Feather Reed Grass
S-9	5 Gal	1	Camellia sasanqua 'Apple Blossom'	NCN
S-10	1 Gal	2	Campanula poscharskyana	Serbian Bellflower
S-11	1 Gal	6	Carex buchamanii	Leather Leaf Sedge
S-12	1 Gal	8	Carex dipsacifolia	Green-Colored Sedge
S-13	1 Gal	2	Coreopsis verticillata 'Moonbeam'	NCN
S-14	1 Gal	13	Echinacea purpurea	Purple Coneflower
S-15	5 Gal	8	Gardenia augusta 'Chuck Hayes'	NCN
S-16	1 Gal	1	Gaura lindheimeri	NCN
S-17	1 Gal	42	Geranium x cantabrigense 'Biokovo'	NCN
S-18	1 Gal	1	Helleborus hyb. 'Royal Heritage'	NCN
S-19	1 Gal	1	Helianthemum nummularium	Sunrose
S-20	1 Gal	1	Helictotrichon sempervirens	Blue Oat Grass
S-21	1 Gal	7	Hemerocallis hyb. 'Barbary Corsair'	Daylily
S-22	1 Gal	8	Hemerocallis hyb. 'Grape Velvet'	Daylily
S-23	1 Gal	7	Hemerocallis hyb. 'Red Velvet'	Daylily
S-24	1 Gal	4	Lavandula angustifolia 'Munstead'	English Lavender
S-25	5 Gal	4	Lavandula angustifolia 'Twickle Purple'	English Lavender
S-26	5 Gal	19	Lavandula dentata	French Lavender
S-27	5 Gal	17	Lavatera thuringica 'Rosea'	NCN
S-28	5 Gal	2	Lonicera hildebrandiana	Giant Burmese Honeyuckle
S-29	5 Gal	4	Loropetalum chinense	NCN
S-30	5 Gal	5	Loropetalum chinense 'Plum Delight'	NCN
S-31	1 Gal	1	Mertensia pulmonarioides	Virginia Bluebells
S-32	5 Gal	1	Miscanthus sinensis 'Morning Light'	Maiden Grass
S-33	1 Gal	17	Nepeta x faassenii	Catmint
S-34	5 Gal	3	Nephrolepis cordifolia	Southern Sword Fern
S-35	1 Gal	1	Ophiopogon planiscapus 'Nigrescens'	Black Mondo Grass
S-36	1 Gal	1	Parahebe catarractae 'Delight'	NCN
S-37	1 Gal	1	Pellaea rotundifolia	Roundleaf Fern
S-38	5 Gal	2	Penstemon setaceum 'Rubrum'	Purple Fountain Grass
S-39	1 Gal	7	Penstemon x gloxinoides 'Apple Blossom'	Beard Tongue
S-40	1 Gal	4	Penstemon x gloxinoides 'Sour Grapes'	Beard Tongue
S-41	1 Gal	3	Perovskia atripliciflora 'Blue Spire'	Russian Sage

S-42	1 Gal	1	Phormium tenax 'Jack Sprat'	New Zealand Flax
S-43	5 Gal	13	Phormium hyb. 'Rainbow Warrior'	NCN
S-44	5 Gal	12	Phormium hyb. 'Yellow Wave'	NCN
S-45	5 Gal	18	Pittosporum tenuifolium 'Marjorie Channon'	NCN
S-46	1 Gal	1	Rehmannia elata	Chinese Foxglove
S-47	5 Gal	24	Rosmarinus officinalis 'Collingwood Ingram'	Rosemary
S-48	1 Gal	11	Rudbeckia fulgida 'Goldstrum'	Black-Eyed Susan
S-49	1 Gal	2	Salvia chiapensis	Chiapas Sage
S-50	5 Gal	8	Salvia clevelandii	Cleveland Sage
S-51	5 Gal	10	Salvia greggii 'Furman's Red'	Autumn Sage
S-52	5 Gal	12	Salvia greggii 'Purple'	Autumn Sage
S-53	1 Gal	14	Santolina chamaecyparissus 'Lemon Joy'	Lavender Cotton
S-54	1 Gal	11	Stachys byzantina	Lamb's Ear
S-55	5 Gal	8	Syringia x chinensis	Chinese Lilac
S-56	1 Gal	32	Teucrium chamaedrys	NCN
S-57	5 Gal	26	Teucrium fruticans	Bush Germander
S-58	5 Gal	3	Grape Vine	Grape
S-59	5 Gal	3	Syringia x chinensis	Lilac Shrub
S-60	5 Gal	10	Muhlenbergia rigens	Deer Grass
S-61	5 Gal	1	Clematis armandii	Evergreen Clematis

CLAY POT PLANTING SCHEDULE

Pot #	Key	Qty.	Botanical Name	Common Name
1	S-41	1	Perovskia atripliciflora 'Blue Spire'	Russian Sage
	S-1	1	Anigozanthos hybrids 'Big Red'	Kangaroo Paw
	S-2	1	Anigozanthos hybrids 'Bush Dawn'	Kangaroo Paw
2	S-41	1	Perovskia atripliciflora 'Blue Spire'	Russian Sage
	S-1	1	Anigozanthos hybrids 'Big Red'	Kangaroo Paw
	S-2	1	Anigozanthos hybrids 'Bush Dawn'	Kangaroo Paw
3	S-49	1	Salvia chiapensis	Chiapas Sage
	S-19	1	Helianthemum nummularium	Sunrose
	S-20	1	Helictotrichon sempervirens	Blue Oat Grass
4	S-42	1	Phormium tenax 'Jack Sprat'	New Zealand Flax
	S-16	1	Gaura lindheimeri	NCN
	S-36	1	Parahebe catarractae 'Delight'	NCN
5	S-9	1	Camellia sasanqua 'Apple Blossom'	NCN
	S-10	2	Campanula poscharskyana	Serbian Bellflower
6	S-4	1	Aspidistra elatior	Cast-Iron Plant
	S-35	1	Ophiopogon planiscapus 'Nigrescens'	Black Mondo Grass
	S-46	1	Rehmannia elata	Chinese Foxglove
7	S-4	1	Aspidistra elatior	Cast-Iron Plant
	S-18	1	Helleborus hyb. 'Royal Heritage'	NCN
	S-31	1	Mertensia pulmonarioides	Virginia Bluebells
8	S-41	1	Perovskia atripliciflora 'Blue Spire'	Russian Sage
	S-13	1	Coreopsis verticillata 'Moonbeam'	NCN
	S-49	1	Salvia chiapensis	Chiapas Sage
9	S-32	1	Miscanthus sinensis 'Morning Light'	Maiden Grass
	S-13	1	Coreopsis verticillata 'Moonbeam'	NCN
	S-1	1	Anigozanthos hybrids 'Big Red'	Kangaroo Paw

Symbol	Size	Groundcovers	Botanical Name	Common Name	Spacing
LAWN		Dwarf Fescue Sod			
4" Pots	4"	Mazus reptans	NCN		12" on center between concrete pavers and flagstone stepping stones
1 Gal	1 Gal	Oxalis oregano	Redwood Sorrel		1'-6" on center

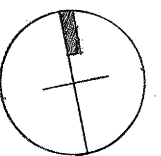


PLANTING NOTES

- Contractor to field verify all utilities within the specified work area and shall be responsible for their protection.
 - Contractor is to prepare the planting areas prior to commencement by spraying any existing weed growth with an approved herbicide at least two weeks prior to planting and to manufacturer's instructions. In addition, contractor is to add six cubic yards of nitrogenated soil amendment per 1000 square feet and roto-tilled to a depth of at least six inches. Where roto-tilling is not possible, incorporate soil amendments into the top six inches of existing soil using hand tools.
 - Planting Plan provides general layout of plant material only. Contractor to verify dimensions with actual field conditions and shall notify the owner and/or Arborealis of all conditions which prevent execution of plans.
 - Plants shall be nursery grown, be sound and free of pests or disease. All plant material is subject to inspection and approval by the owner and/or Arborealis upon delivery to site and following planting.
 - Contractor to protect plant roots and tops from sun or drying winds until final planting.
 - Contractor shall be responsible for backfilling all planting areas with approved planting soil mix. All construction debris is to be removed from the site prior to commencing with planting and shall not be used as backfill material in any way.
 - Contractor shall be responsible for verifying quantities noted on plant list.
 a. 1 gallon= 2 tablets
 b. 5 gallon= 3 tablets
 c. 15 gallon= 5 tablets
 d. 24" box= 6 tablets
 e. 36" box= 8 tablets
- ***All planting beds to be covered with 2-3" finely shredded pine or cedar mulch.

ARBOREALIS
 LANDSCAPE DESIGNS
 Arthur Brito
 1440 Broadway, Suite 200
 Oakland, CA 94612
 510.444.3808

PLANTING PLAN



SUBMISSION: DATE:

DATE: 03.07.05

SCALE: 1/8" = 1'-0"

PROJECT #: 0537

DRAWN BY: A.A.B.

SHEET

L-4

OF 4 SHEETS